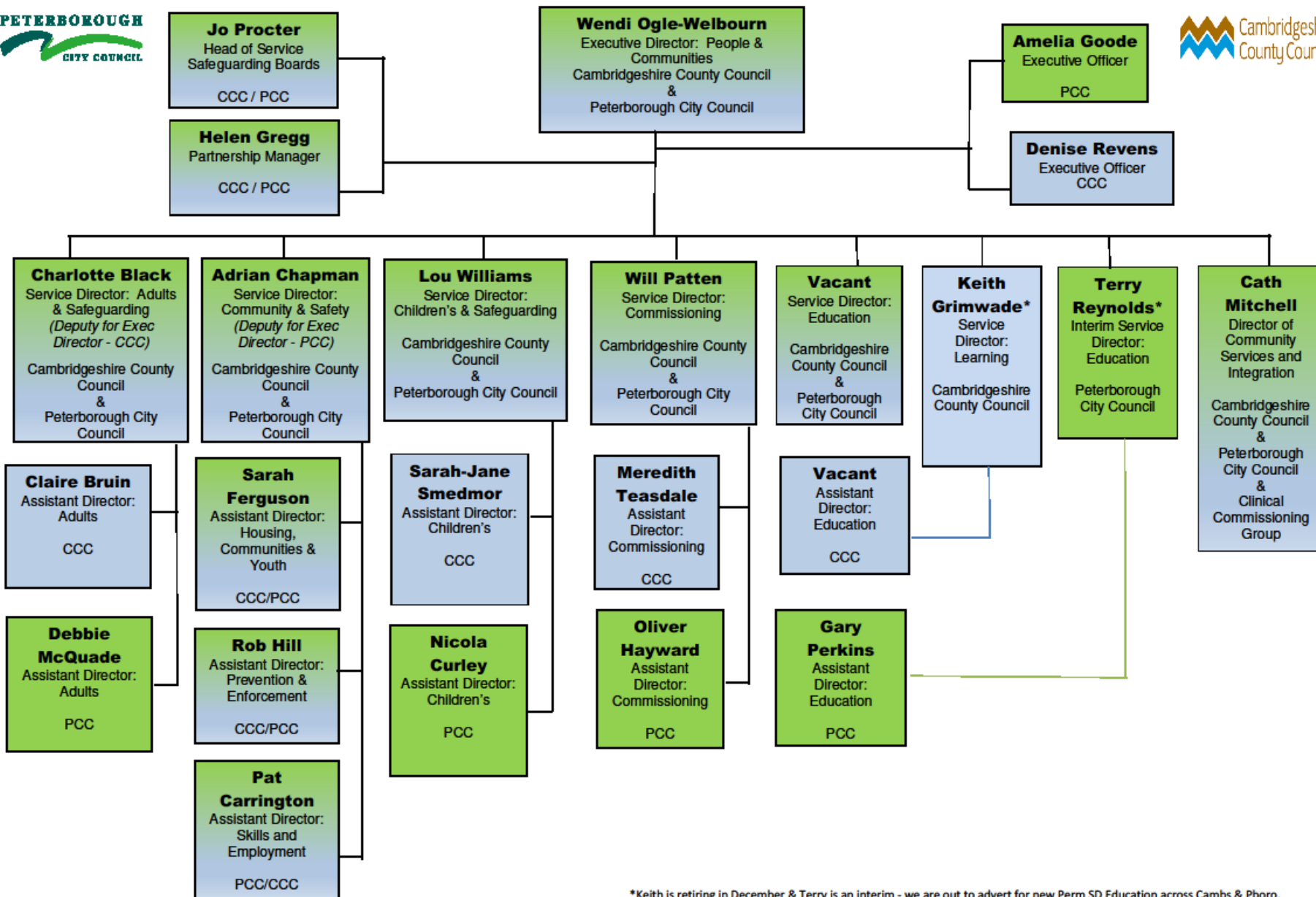


# People & Communities

**Oliver Hayward**

**Assistant Director**

**People Commissioning and  
Commercial Operations**



\*Keith is retiring in December & Terry is an interim - we are out to advert for new Perm SD Education across Cambs & Pboro.  
Theresa Levy interim Service Director in Cambs will remain in post until December to see through the changes to our Children Centre delivery and Children Social Care ICT change to Mosaic.

# Cambridgeshire & Peterborough Working Together to:



Cambridgeshire  
County Council

## Drive Delivery of:



- ◆ The right services
- ◆ To the right people, families and communities
- ◆ By the right people
- ◆ At the right time
- ◆ In the right place
- ◆ At the right cost

# P & C Services



- ◆ Adults
- ◆ Children & Families
- ◆ Education 0-19
- ◆ Community and Safety
- ◆ Commissioning

# Core Functions - Adults

## ◆ Responsibilities under the Care Act 2014



- Promoting individual wellbeing
  - Right to support for family/informal carers
  - Focuses on preventing, delaying & reducing the need for care & support
  - Embeds choice & control through personal budgets & use of Direct Payments
  - Safeguarding adults with care and support needs from abuse or neglect
- 
- ◆ Assessment of need and arrangements for care & support
    - Enable people to live independently
    - Support people in a way that works for them
    - Support the development of strong, connected communities
    - Recognise the strengths of individuals, families and communities and build upon these
    - Work in partnership with others



# Core Functions - Children



- ◆ Our work is all within a statutory framework and largely governed by the Children’s Act 1989, Children and Families Act 2014, Children and Social Work Act 2017 and Working Together.
- ◆ Early Help and social work services delivered to the children and families of Cambridgeshire.
- ◆ Support families and communities, including schools, in caring for their children and ensuring they achieve the best outcomes they can.
- ◆ Investigating and intervening when children are harmed and where necessary in providing them with an alternative family or care environment in order to meet their needs.

# Children's and Families Work Areas



- ◆ **Integrated Front Door** – All new requests for Child Protection or Early Help, Child Protection investigations, Missing and CSE Hub, Emergency Duty Team
- ◆ **Integrated District Service** – all children centres, family support, youth support, education welfare and inclusion and social work including child protection court work and contact for children in care
- ◆ **Special Educational Needs and Disability (SEND)** – development of 0-25 integrated services for children and young people with special educational needs or a disability
- ◆ **Looked After Children Services** including social work teams for older children and care leavers and Unaccompanied Asylum Seeking children.
- ◆ **Intensive support services** for children at risk of becoming looked after including residential care.
- ◆ **Fostering Service** - Adoption Service
- ◆ **Partnerships and Quality Assurance** – Child Protection Conferences, Reviewing Officers for Looked after Children, complains, participation and audit.



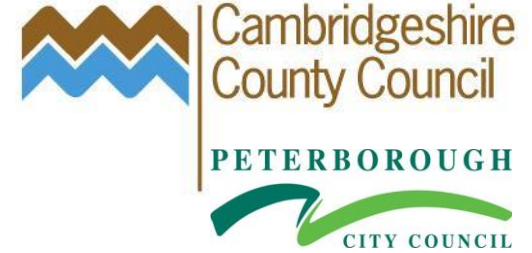
# Core Functions -Education 0 - 19



- Statutory responsibilities for making sure there are enough places for children in settings and schools; for school admissions; for home to school transport; for the educational outcomes of vulnerable groups, e.g. SEND and LAC; for inclusion, alternative provision and attendance; and for improvement in maintained schools.
- Support, challenge and training for early years and childcare providers in schools and PVI settings to improve their quality and meet their statutory responsibilities and ensure long-term sustainability.
- A champion for children and parents, enduring that the school system works for every family.
- Brokering support between schools, facilitating networks and partnerships and signposting opportunities.
- A provider of services, commissioned or traded.



# Core Functions - Community & Safety -



- ◆ Domestic abuse & sexual violence (*including violence against women & girls*)
- ◆ Substance Misuse
- ◆ Youth Offending and Youth engagement
- ◆ Homeless Families
- ◆ Building Community Capacity
- ◆ Adult Skills
- ◆ Prevention and Enforcement
- ◆ Community Cohesion

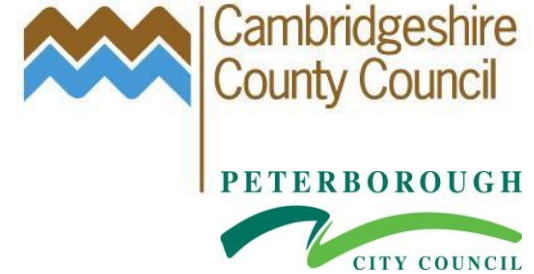
Much of this work is done in partnership with the District Councils, Police, Fire, Probation and Health

# Commissioning Priorities



- ◆ **Demand Management** - Prioritise commissioning of services that will prevent or delay escalating support and service needs
- ◆ **Market Development** - Develop the market with partners – ensure diversity, capacity, best value and outcomes are delivered - sustainably
- ◆ **Optimise Services** - Evidence based approach to services and solutions – must demonstrate meeting needs in the most cost effective way
- ◆ **Collaborative commissioning** - Jointly commission where there are economies of scale and/or improved outcomes
- ◆ **Return on Investment** - Commission on the basis of clear, whole life costed benefits – including Social and Environmental outcomes

# Commissioning Intentions



- ◆ Safeguarding children and vulnerable adults and reduce cycles of abuse and neglect
- ◆ Meeting the needs of children and adults with Learning Disabilities and Physical Disabilities
- ◆ Meeting demands of an ageing population by supporting adults to retain or regain their independence through reablement and personalisation
- ◆ Meet demand of Increased mental health needs in the population
- ◆ Meet demand of increased number of children with more acute special educational needs
- ◆ Respond to Population growth & new communities becoming more diverse

# Engagement with Service Users/Parents/Carers & Public

- ◆ Strongest in the area of disability – adult and children, young people
- ◆ Less strong in the areas of adult and child protection
- ◆ Not consistently engaging users, parents and carers and the public in commissioning